



2026

ANGELSTONE  
EVENTS

GOLD SERIES

PRIZELIST

CALEDON  
FALL TOUR



**Kubota**

# IT'S A TOUGH JOB. BUT NOTHING FEELS BETTER THAN DOING IT YOURSELF.

That's where we come in. Our family of Kubota equipment is impeccably designed to help you take on any job, big or small. Visit us online to find out more.



kubota.ca |    

# 2026

## GOLD SERIES SHOW DATES

TOUR	DATE	EVENTS
Caledon Spring Tour	May 6-10	CEP SPRING 1 - The Caledon Welcome
	May 13-17	CEP SPRING 2 - The Motion Endeavours Cup
	June 3-7	CEP SPRING 3 - The System Equine Cup
	June 10-14	CEP SPRING 4 - The Masterfeeds Summer Showcase
Angelstone Canada Day Tour	June 24-28	ASE 1 - The Ride Every Stride Cup
	July 1-5	ASE 2 - Great Pony Challenge & Stewart's Cup
Caledon Summer Tour	July 15-19	CEP SUMMER 1 - EHT Global Open CSI2* & World Hunter Week
	July 22-26	CEP SUMMER 2 - The Kubota International CSI2*
	August 5-9	CEP SUMMER 3 - Carolyn Scime International Cup of Caledon CSI2*
	August 12-16	CEP SUMMER 4 - Mad Barn Summer Classic
August at Angelstone	August 26-30	ASE 3 - Hunter Spectacular & Angelstone Classic CSI2*
	September 2-6	ASE 4 - Major League Toronto CSI5*/2*
Caledon Fall Tour	September 16-20	CEP FALL 1 - The BFL Cup
	September 23-27	CEP FALL 2 - The Greenhawk Fall Cup
	September 30-October 4	CEP FALL 3 - The Indoor Finale



## PROTECT YOUR INVESTMENT.

At **BFL CANADA**, we are proud to offer outstanding insurance products for:

- Horses
- Farms
- Coaches
- Clubs
- Competitions
- Farriers
- Grooms
- Horse Trailers

For more information:



1-800-668-5901  
equine@bflcanada.ca  
@bfl equine    
bflcanada.ca/equine

BFL CANADA is 100% Canadian, private, independent, employee-owned and operated.

# 2026

## ANGELSTONE EVENTS WEEKLY FEATURES

### CALEDON SPRING TOUR

---

#### 1. The Caledon Welcome

May 6-10

\$25,000 National Grand Prix  
\$10,000 Open Welcome 1.35m  
\$5,000 Modified Grand Prix 1.35m  
\$2,500 Jr/Am Jumper Classics  
\$5,000 Hunter Derby  
\$2,000 Jr/Am Hunter Classic  
\$1,000 Pony Hunter Derby  
\$1,000 Thoroughbred Hunter Classic

#### 2. The Motion Endeavours Cup

May 13-17

\$25,000 National Grand Prix  
\$10,000 Open Welcome 1.35m  
\$10,000 Modified Grand Prix 1.35m  
\$5,000 Jr/Am Jumper Classics  
\$2,000 Thoroughbred Jumper Classic  
\$3,000 Hunter Derby  
\$1,000 Pony Classic  
Young Hunter Development Series

#### 3. The System Equine Cup

June 3-7

\$25,000 National Grand Prix  
\$10,000 Open Welcome 1.35m  
\$5,000 Modified Grand Prix 1.35m  
\$2,500 Jr/Am Jumper Classics  
\$3,000 Hunter Derby  
\$2,000 Jr/Am Hunter Classic  
\$1,000 Pony Derby  
\$1,000 Thoroughbred Hunter Classic

#### 4. The Masterfeeds Summer Showcase

June 10-14

\$25,000 National Grand Prix  
\$10,000 Open Welcome 1.35m  
\$10,000 Modified Grand Prix 1.35m  
\$5,000 Jr/Am Jumper Classics  
\$2,000 Thoroughbred Jumper Classic  
\$5,000 Hunter Derby  
\$1,000 Pony Hunter Classic  
\$1,000 Beginner Modified Classic  
Young Hunter Development Series

### ANGELSTONE CANADA DAY TOUR

---

#### 1. The Ride Every Stride Cup

June 24-28

\$25,000 National Grand Prix  
\$10,000 Open Welcome 1.35m  
\$5,000 Modified Grand Prix 1.35m  
\$2,500 Jr/Am Jumper Classics  
\$5,000 Hunter Derby  
\$1,000 Pony Hunter Derby  
\$1,000 Thoroughbred Hunter Classic

#### 2. The Great Pony Challenge & Stewart's Equipment Cup

June 25-29

\$40,000 National Grand Prix  
\$10,000 Open Welcome 1.35m  
\$2,500 Modified Grand Prix 1.35m  
\$2,500 Jr/Am Jumper Classics  
\$2,000 Thoroughbred Jumper Classic  
\$15,000 Hunter Derby  
\$10,000 Jr/Am Hunter Classic  
Great Pony Challenge  
Young Hunter Development Series

## CALEDON SUMMER TOUR

### 1. EHT Global Open CSI2\* & World Hunter Week

July 15-19 (EC/USEF/FEI)

\$32,000 FEI Opener  
\$32,000 FEI 2\* Grand Prix  
\$10,000 National Grand Prix  
\$5,000 Modified Grand Prix 1.35m  
\$2,500 Jr/Am Jumper Classics  
\$15,000 Hunter Derby  
\$2,000 Jr/Am Hunter Classic  
\$1,000 Thoroughbred Hunter Classic  
\$1,000 Pony Hunter Derby  
\$1,000 Beginner/Modified Hunter Classic  
Young Hunter Development Series

### 3. Carolyn Scime International Cup of Caledon CSI2\*

August 5-9 (EC/USEF/FEI)

\$117,000 FEI 3\* Grand Prix  
\$30,000 Nations Cup  
\$10,000 National Grand Prix  
\$5,000 Modified Grand Prix 1.35m  
\$5,000 Jr/Am Jumper Classics  
\$3,000 Hunter Derby  
\$1,000 Pony Derby

### 2. The Kubota International CSI2\*

July 22-29 (EC/USEF/FEI)

\$32,000 FEI Opener  
\$32,000 FEI 2\* Grand Prix  
\$10,000 National Grand Prix  
\$5,000 Modified Grand Prix 1.35m  
\$5,000 Jr/Am Jumper Classics  
\$2,000 Thoroughbred Jumper Classic  
\$3,000 Hunter Derby  
\$1,000 Pony Classic

### 4. Mad Barn Summer Classic

August 12-16 (EC/USEF)

\$5,000 Open Welcome  
\$10,000 Modified Grand Prix 1.35m  
\$2,500 Jr/Am Jumper Classics  
\$2,000 Thoroughbred Jumper Classic  
\$5,000 OHJA Hunter Derby  
\$2,000 Jr/Am Hunter Classic  
\$1,000 Pony Classic  
\$1,000 Thoroughbred Hunter Classic  
Young Hunter Development Series

## AUGUST AT ANGELSTONE

### 1. The Hunter Spectacular & Angelstone Classic CSI2\*

August 26-30 (EC/USEF/FEI)

\$32,000 FEI Opener  
\$32,000 FEI 2\* Grand Prix  
\$10,000 National Grand Prix  
\$5,000 Modified Grand Prix 1.35m  
\$2,500 Jr/Am Jumper Classics  
\$5,000 Hunter Derby  
\$2,000 Jr/Am Hunter Classic  
\$1,000 Pony Hunter Derby  
\$1,000 Thoroughbred Hunter Classic  
Young Hunter Development Series

### 2. Major League Toronto CSI5\*/2\*

September 2-6 (EC/FEI)

\$340,000 FEI 5\* Grand Prix  
\$200,000 Major League Showjumping Team Competition  
\$32,000 FEI 2\* Qualifier  
\$32,000 FEI 2\* Grand Prix  
\$10,000 National Grand Prix  
\$5,000 Modified Grand Prix 1.35m  
\$5,000 Jr/Am Jumper Classics  
\$2,000 Thoroughbred Jumper Classic  
\$15,000 Hunter Derby  
\$1,000 Pony Classic

## CALEDON FALL TOUR

### 1. The BFL Cup

September 16-20

\$25,000 National Grand Prix  
\$10,000 Open Welcome 1.35m  
\$5,000 Modified Grand Prix 1.35m  
\$2,500 Jr/Am Jumper Classics  
\$2,000 Thoroughbred Jumper Classic  
\$3,000 Hunter Derby  
\$1,000 Thoroughbred Hunter Classic  
\$1,000 Pony Classic  
Jump Canada Regional Finals  
CET Medal Regional Finals  
CET Mini Medal Final  
Young Hunter Development Series

### 3. The Indoor Finale

September 30-October 4

\$1,000 Pony Classic Final

### 2. The Greenhawk Fall Cup & Outdoor Finale

September 23-27 (EC/USEF/FEI)

\$25,000 National Grand Prix  
\$10,000 Open Welcome 1.35m  
\$10,000 Modified Grand Prix 1.35m  
\$5,000 Jr/Am Jumper Classics  
\$2,000 Thoroughbred Jumper Series Final  
\$16,500 Young Jumper Series Final  
\$15,000 Hunter Derby  
\$10,000 Jr/Am Hunter Classic Final  
\$5,000 Green Hunter Incentive Final  
\$1,000 Thoroughbred Hunter Classic Final  
\$1,000 Pony Hunter Derby Final  
\$5,000 Canadian Open Medal Final  
Young Hunter Development Series Final  
Beginner/Modified Hunter Classic Final



**CABANA COAST**

# 2026

## POINT MULTIPLIERS

Points are calculated based on the finishing position in the class, entries in each class and multiplier of each event.

Angelstone Circuit point system: 1st - 10, 2nd - 8, 3rd - 6, 4th - 5, 5th - 4, 6th - 3, 7th - 2, 8th - 1

Therefore - if a horse wins a class with 20 entries at a show with a multiplier of 2x the calculation will be as follows

10 (points to win) x 20 (entries in the class) x 2 (multiplier of the event) = 400 points

**CEP SPRING 1. The Caledon Welcome : May 6-10 ... 1x**

**CEP SPRING 2. The Motion Endeavours Cup : May 13-17 ... 1x**

**CEP SPRING 3. The System Equine Cup : June 3-7 ... 1.25x**

**CEP SPRING 4. The Masterfeeds Summer Showcase : June 10-14 ... 1.25x**

**ASE 1. The Ride Every Stride Cup : June 24-28 ... 1.25x**

**ASE 2. The Great Pony Challenge & Stewart's Equipment Cup : July 1-5 ... 1.5x**

**CEP SUMMER 1. EHT Global Open CSI2\* & World Hunter Week : July 15-19 ... 2x**

**CEP SUMMER 2. The Kubota International CSI2\* : July 22-26 ... 1.5x**

**CEP SUMMER 3. Carolyn Scime International Cup of Caledon CSI2\* : August 5-9 ... 2x**

**CEP SUMMER 4. Mad Barn Summer Classic : August 12-16 ... 1.5x**

**ASE 3. The Hunter Spectacular & Labor Day Classic CSI2\* : August 26-30 ... 2x**

**ASE 4. Major League Toronto CSI5\*/2\* : September 2-6 ... 2x**

**CEP FALL 1. The BFL Cup : September 16-20 ... 1.5x**

**CEP FALL 2. The Greenhawk Outdoor Finale : September 23-27 ... 2.5x**

**CEP FALL 3. The Indoor Finale (Last event for RAWF Points) : September 30 - October 4 ... 2x**



	Main Stadium	Masterfeeds Indoor Stadium	BFL Hunter Ring	Meilsoe Hunter Ring	Kubota Arena
TUE	CLOSED	9:00 AM - 5:00 PM \$40 Warm-Up Tickets	9:00 AM - 5:00 PM \$40 Warm-Up Tickets	9:00 AM - 5:00 PM \$40 Warm-Up Tickets	CLOSED
SEP 16	222 1.10m Schooling 270 YHC 5yo (Open Card) 259 Open 1.15m Two Phase 273 YHC 6yo (Open Card) 262 Open 1.25m Two Phase 276 YHC 7yo (Open Card) 265 Open 1.35m Two Phase 220 1.0m Schooling Jumper	7,8 Low Hunter 2'0 (Verticals only) 12,13 Low Hunter 2'3"	22,23 Low Hunter 27,28 Baby Green 17,18 Low Hunter 2'6"	2 Schooling Hunter 3'0-3'3" 32,33 Pre-Green Hunter 1 Schooling Hunter 3'3"-4'0 37,38 High Performance 3'3"/3'6" 41 High Performance U/S 42,43 Combined Working 46 Combined Working U/S	201/206,202/207 0.60/0.75m Schooling 211,212 0.90m Schooling 216,217 1.0m Schooling
SEP 17	221 1.10m Schooling 271 YHC 5yo (Open Card) 260 \$1,500 Open 1.15m Table A 274 YHC 6yo (Open Card) 263 \$2,500 Open 1.25m Table A 277 YHC 7yo (Open Card) 700 \$10,000 Open Welcome 1.35m	9,10 Low Hunter 2'0 (Verticals only) 11 Low Hunter 2'0 U/S 14,15 Low Hunter 2'3" 16 Low Hunter 2'3" U/S 19,20 Low Hunter 2'6" 21 Low Hunter 2'6" U/S	26 Low Hunter U/S 31 Baby Green U/S 24,25 Low Hunter 29,30 Baby Green-Green 126 Show Hack 127 Pleasure Hack 121 Young Hunter Model 122 Young Hunter U/S 124 Young Hunter Schooling 123 Young Hunter O/F	4 Schooling Hunter 3'0-3'3" 34,35 Pre-Green Hunter -120 Green Incentive 36 Pre-Green Hunter U/S 39,40 High Performance 3'3"/3'6" 44,45 Combined Working - 120 Green Incentive	203/208,204/209 0.60/0.75m Schooling 213,214 0.90m Schooling 218,219 1.0m Schooling 223 1.10m Schooling Jumper 159 Canadian Open Gymnastic Phase 157 CET Medal Final
SEP 18	258 Open 1.15m Table A Speed 261 Open 1.25m Table A Speed 264 Open 1.35m Table A Speed 252 Jr/Am 1.30m Table A Speed 255 Jr/Am 1.40m Table A Speed 249 Jr/Am 1.20m Speed 246 1.10m Table A Speed 242 1.0m Table A Speed 215B 0.9m Jumper Schooling	104,105,106 Children's Pony (L-M-S) 107 Children's Pony U/S 170 Short/Long Stirrup Medal 108,109 Short/Long Stirrup 110 Short/Long Stirrup U/S 111 Walk/Trot 112 Walk/Trot/Canter 113,114 Crossrails 115 Crossrails U/S 116 Pole - Equitation 117 Pole - Traditional 118 Pole - W/T U/S	161 RES Small Pony Medal 99,100 Small Pony 103 Small Pony U/S 162 RES Medium Pony Medal 94,95 Medium Pony 98 Medium Pony U/S 163 RES Large Pony Medal 89,90 Large Pony 93 Large Pony U/S	1505 \$1,000 Jr/Am 2'6"/2'9" Derby 500 \$3,000 3'0/3'6" Founders Hunter Derby 501 Jr/Am Overlay 510 Thoroughbred Hunter Classic 156 Jump Canada Medal Final	205 0.60m Schooling 230 0.60m Table A Speed 210 0.75m Schooling Jumper 234 0.75m Table A Speed 215 0.90m Schooling Jumper 238 0.90m Table A Speed 158 Canadian Open Jumping Phase
SEP 19	243 1.0m Jumper Two Phase 247 1.10m Two Phase 250 Jr/Am 1.20m Two Phase 253/256 Jr/Am 1.30/1.40m Two Phase 601 \$5,000 Modified Grand Prix 1.30-1.35m 999 Leadline 800 \$25,000 Grand Prix 1.40m 801 \$1,000 U25 (Overlay)	91,92 Large Pony 96,97 Medium Pony 101,102 Small Pony 508 \$1,000 Pony Classic	166 RES Junioer Medal 67,68 Junior Hunter 84,85 Junior/Amateur 3'3" 88 Junior/Amateur 3'3" U/S 57,58 Amateur Owner 3'0 61 Amateur Owner 3'0 U/S 172 RES Beginner Medal 76,77,78 Beginner Ch/Ad Hunter 79 Beginner Child/Adult U/S	167 RES Amateur 3'6" Medal 62,63 Amateur Owner 3'6" 47,48 Adult Amateur 52,53 Children's Hunter	244 1.0m Speed 239 0.90m Two Phase 240 0.90m Speed 235 0.75m Two Phase 231 0.60m Jumper Two Phase
SEP 20	248 \$1,000 Jr/Am 1.10m Classic 272 \$300 YHC 5yo Classic (Open Card) 251 \$2,500 Jr/Am 1.20m Classic 275 \$300 YHC 6yo Classic (Open Card) 254/257 \$2,500 Jr/Am 1.30/1.40m Classic 278 \$300 YHC 7yo Classic (Open Card) 245 \$750 Jr/Am 1.0m Classic 290 \$2,000 Thoroughbred Jumper Classic Overlay	59,60 Amateur Owner 3'0 172 RES Low Child/Adult Medal 80,81,82 Low Child/Adult 83 Low Child/Adult U/S 72,73,74 Jr/Am 2'6" Hunter 75 Jr/Am 2'6" Hunter U/S	165 RES Adult Medal 3'0 49,50 Adult Amateur 51 Adult Amateur U/S 164 RES Children's Medal 54,55 Children's Hunter 56 Children's Hunter U/S	69,70 Junior Hunter 71 Junior Hunter U/S 66 Amateur Owner 3'6" U/S 64,65 Amateur Owner 3'6" 86,87 Junior/Amateur 3'3" 507 \$2,000 Jr/Am 3'0/3'3"/3'6" Classic	160 CET Mini Medal Final 241 \$750 Jr/Am 0.90m Classic 236 0.75m Speed 237 \$500 Jr/Am 0.75m Classic 232 0.60m Jumper Table A Speed 233 \$500 Jr/Am 0.60m Classic 299 Pony Jumper Speed (S0.7/M0.75/L0.8) 300 \$500 Pony Jumper Classic (S0.7/M0.75/L0.8)

	Main Stadium	Masterfeeds Indoor Stadium	BFL Hunter Ring	Meilsoe Ring	Kubota Arena
SEP 22	CLOSED	CLOSED	9:00 AM - 5:00 PM \$40 Warm-Up Tickets	9:00 AM - 5:00 PM \$40 Warm-Up Tickets	9:00 AM - 5:00 PM \$40 Warm-Up Tickets
SEP 23	221 1.10m Schooling 259 1.15m Two Phase 262 1.25m Two Phase 265 1.35m Two Phase	201/206,202/207 0.60/0.75m Schooling 211,212 0.90m Schooling 216,217 1.0m Schooling	7,8 Low Hunter 2'0 (Verticals only) 12,13 Low Hunter 2'3"	22,23 Low Hunter 27,28 Baby Green 17,18 Low Hunter 2'6"	1 Schooling Hunter 3'3"-4'0 37,38 High Performance 3'3"/3'6" 41 High Performance U/S 42,43 Combined Working 46 Combined Working U/S 2 Schooling Hunter 3'0-3'3"
SEP 24	223 1.10m Schooling Jumper 260 \$1,500 1.15m Table A Jump-off 263 \$5,000 1.25m Jump-off <b>700 \$10,000 Open Welcome</b>	203/208,204/209 0.60/0.75m Schooling 213,214 0.90m Schooling 218,219 1.0m Schooling	9,10 Low Hunter 2'0 (Verticals only) 11 Low Hunter 2'0 U/S 14,15 Low Hunter 2'3" 16 Low Hunter 2'3" U/S 19,20 Low Hunter 2'6" 21 Low Hunter 2'6" U/S	26 Low Hunter U/S 31 Baby Green U/S 24,25 Low Hunter 29,30 Baby Green 126 Show Hack 127 Pleasure Hack 121 Young Hunter Model 122 Young Hunter U/S	4 Schooling Hunter 3 Schooling Hunter 3'0-3'3" 34,35 Pre-Green Hunter 39,40 High Performance 3'3"/3'6" 44,45 Combined Working Hunter 120 Green Incentive Final
SEP 25	258 Open 1.15m Table A Speed 261 Open 1.25m Table A Speed 264 Open 1.35m Table A Speed 252 Jr/Am 1.30m Table A Speed 255 Jr/Am 1.40m Table A Speed 249 Jr/Am 1.20m Speed 246 1.10m Table A Speed 270 5 Year Old Jumper Final Round 1 273 6 Year Old Young Jumper Final round 1 276 7 Year Old Jumper Final Round 1	205 0.60m Schooling 230 0.60m Table A Speed 210 0.75m Schooling Jumper 234 0.75m Table A Speed 215 0.9m Schooling Jumper 238 0.90m Table A Speed 220 1.0m Schooling 242 1.0m Table A FINALS 159 Canadian Open Medal - Gymnastic 158 Canadian Open Jumping Phase	163 RES Large Pony Medal 89,90 Large Pony 93 Large Pony U/S 1 62 RES Medium Pony Medal 94,95 Medium Pony 98 Medium Pony U/S 161 RES Small Pony Medal 99,100 Small Pony 103 Small Pony U/S	104,105,106 Children's Pony (L-M-S) 107 Children's Pony U/S 170 Short/Long Stirrup Medal 108,109 Short/Long Stirrup 110 Short/Long Stirrup U/S 111 Walk/Trot 112 Walk/Trot/Canter 113,114 Crossrails	1505 \$1,000 Jr/Am 2'6"/2'9" Derby <b>500 \$15,000 CHD 3'0/3'6" Hunter Derby</b> 501 Jr/Am Overlay 510 Thoroughbred Hunter Classic FINAL
SEP 26	247 1.10m Two Phase 250 Jr/Am 1.20m Two Phase 253/256 Jr/Am 1.30/1.40m Two Phase 602 \$10,000 Modified Grand Prix 1.30-1.35m <b>6:00 PM</b> <b>800 \$25,000 Grand Prix 1.40m</b> <b>801 \$1,000 U25 (Overlay)</b>	243 1.0m Jumper Two Phase 239 0.90m Two Phase 231 0.60m Jumper Two Phase 235 0.75m Jumper Two Phase 2026 Jr/Am Team Challenge (0.6-1.0m) FINAL	164 RES Children's Medal 52,53 Children's Hunter 165 RES Amateur Medal 3'0 47,48 Adult Amateur 73,74 Jr/Am 2'6" Hunter 75 Jr/Am 2'6" Hunter U/S	101,102 Small Pony Power Final 96,97 Medium Pony Power Final 91,92 Large Pony Pony Power Final 508 \$1,000 Pony Derby FINAL	84,85 Junior/Amateur 3'3" 166 RES Junior Medal 67,68 Junior Hunter 71 Junior Hunter U/S 167 RES Amateur 3'6" Medal 62, 63 Amateur Owner 3'6" 66 Amateur Owner 3'6" U/S 57,58 Amateur Owner 3'0
SEP 27	248 \$1,000 Jr/Am 1.10m Classic 251 \$2,500 Jr/Am 1.20m Classic 254/257 \$5,000 Jr/Am 1.30/1.40m Classic 5 Year Old Jumper Final Round 2 273 6 Year Old Young Jumper Final round 2 276 7 Year Old Jumper Final Round 2 245 \$750 Jr/Am 1.0m Classic. 290 \$2,000 Thoroughbred Jumper Classic FINAL	241 \$750 Jr/Am 0.90m Jumper Classic 237 \$500 Jr/Am 0.75m Classic 236 0.75m Speed 232 0.60m Jumper Table A Speed 233 \$500 Jr/Am 0.60m Classic 299 Pony Jumper Speed (S0.7/M0.75/L0.8) 300 \$500 Pony Jumper Classic (S0.7/M0.75/L0.8)	172 RES Low Medal 80,81,82 Low Child/Adult 83 Low Child/Adult U/S 171 RES Beginner Medal 76,77,78 Beginner Ch/Ad Hunter 79 Beginner Child/Adult U/S 509 \$1,000 Beginner Low Child/Adult 2'6"/2'9" FINAL	49,50 Adult Amateur 51 Adult Amateur U/S 54,55 Children's Hunter 56 Children's Hunter U/S 61 Amateur Owner 3'0 U/S 60 Amateur Owner 3'0	69,70 Junior Hunter 64,65 Amateur Owner 3'6" 86,87 Junior/Amateur 3'3" 88 Junior Amateur 3'3" U/S 507 \$10,000 Jr/Am 3'0/3'3"/3'6" Classic FINAL

# Proudly made with 100% Ontario apples.

Locally Made, Naturally Refreshing.



[pommies.com](http://pommies.com)



[@pommiescider](https://www.instagram.com/pommiescider)

Please enjoy responsibly.

# GENERAL INFORMATION

GENERAL INQUIRIES FOR: [office@angelstone.ca](mailto:office@angelstone.ca)

WEBSITE: [www.angelstone.ca](http://www.angelstone.ca)

SCAN THIS



[equestrian.digital](#)

Entries will be accepted through Equestrian Digital only.  
Daily Ring Schedules will be available on the Angelstone App  
[entries.equestrian.digital](#)

## VENUE INFORMATION



### Angelstone Events

SHOW OFFICE

EMAIL [ASEoffice@angelstone.ca](mailto:ASEoffice@angelstone.ca)

MAILING ADDRESS

P.O. Box 634, Rockwood, ON N0B 2K0

SHOW GROUNDS ADDRESS

8720 Wellington County Rd 50, Erin, ON N0B 2K0



### Caledon Equestrian Park

SHOW OFFICE

PHONE 905-880-5344

EMAIL [CEPoffice@angelstone.ca](mailto:CEPoffice@angelstone.ca)

MAILING/COURIER ADDRESS

MAIN ENTRANCE - Spectators & Exhibitors

200 Pine Ave, Caledon ON L7E 0M1

NORTH ENTRANCE - All Campers & Horse Trailers

49 Buckstown Trail, Caledon, ON L7E 0M1

## FOLLOW US ON OUR SOCIAL MEDIA

FOR ALL OUR LATEST NEWS AND ANNOUNCEMENT  
STAY CONNECTED, WE WILL KEEP YOU UPDATED.

 [www.facebook.com/angelstonetournaments](http://www.facebook.com/angelstonetournaments)

 [www.instagram.com/angelstoneevents](http://www.instagram.com/angelstoneevents)

 [www.tiktok.com/@angelstoneevents](http://www.tiktok.com/@angelstoneevents)

# ANGELSTONE EVENTS MANAGEMENT TEAM



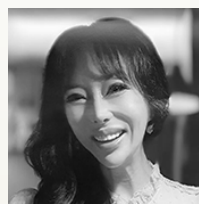
**Kean White**  
CEO  
kean.white  
@angelstone.ca



**Ryan Clermont**  
Vice President  
ryan.clermont  
@angelstone.ca



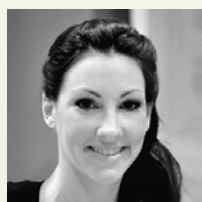
**Dan Galang**  
Finance  
dan.galang  
@angelstone.ca



**Victoria Clermont**  
Creative Director  
victoria.clermont  
@angelstone.ca



**Kellie White**  
Event Marketing Manager  
kellie.white  
@angelstone.ca



**Kelly Clermont**  
Hospitality Manager  
kelly.clermont  
@angelstone.ca



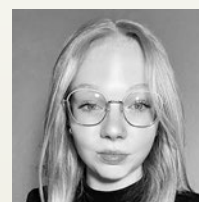
**Kiria Shantz**  
Office Manager  
kiria.shantz  
@angelstone.ca



**Yvonne Busby**  
Office Manager  
yvonne.busby  
@angelstone.ca



**Jessica Daubney**  
Office Administration  
jessica.daubney  
@angelstone.ca



**Sky Tremaine**  
Office  
sky.tremaine  
@angelstone.ca



**Danielle Kendall**  
Sponsorship Director  
danielle.kendall  
@angelstone.ca



**Georgia Ormerod**  
Social Media Manager  
georgia.ormerod  
@angelstone.ca



**Aj McCoy**  
Show Manager  
aj.mccoy  
@angelstone.ca



**Andrew Mattison**  
Crew Manager  
drew.mattison  
@angelstone.ca



**Paul Bélanger**  
Co-Manager



**Christopher Rintoul**  
Site Manager



**Avery Gahagan**  
Customer Relations



**Peter Canzio**  
Crew Manager



**Griffin Busch**  
Back of House Manager



**Jaydon Durfy**  
Back of House Manager

## 2026 STAFF

**Timing:** Angelstone Events

**Presentations:** Shelia Johnstone / Penny Murray

**Photographer:** Laurel Jarvis | [www.laureljarvis.com](http://www.laureljarvis.com)

**Food Services:** Lein Catering 416-251-5858

**Medic:** canaPHEM

**Veterinarians:** Trillium Equine Vet Services 365-799-6470

**ASE On-Site Farrier:** Jordan Ouellet 905-807-6958

**CEP On-Site Farrier:** Jordan Ouellet 905-807-6958

# CALEDON FALL TOUR OFFICIALS



The following officials have been invited.  
The management reserves the right to modify this list.

## 1. The BFL Cup: September 16-20

- **Course Designers:** Martin Otto, William Dean-Stobie, Gabriel Belanger
- **Hunter Judges:** Lauren Schweppe, Wendy Perlta, Jonathan Martin
- **Jumper Jury:** Jennifer De Neef, Cynthia Gerred, Brad Gabriel
- **Steward:** Allan Erhlick, Marj O'Donnell

## 2. The Greenhawk Fall Cup: September 22-27

- **Course Designers:** Michel Vaillancourt, William Dean-Stobie, Chris Gahan
- **Hunter Judges:** Chance Arkelian, Connie Hunt, Tom Brennan
- **Jumper Jury:** Jennifer De Neef, Cynthia Gerred, Brad Gabriel
- **Steward:** Allan Erhlick, Marj O'Donnell

## 3. The Indoor Finale: September 30-October 4

- **Course Designers:** William Dean-Stobie
- **Hunter Judges:** Steve Rivetts
- **Jumper Jury:** Brad Gabriel
- **Steward:** Allan Erhlick, Marj O'Donnell

**A  
BIT**  
OF BAKER'S

THE GO-TO PLACE FOR EVERYTHING  
EQUESTRIAN SINCE 1980.



WWW.ABITOFBAKERS.COM

save  
**10%**  
OFF

USE CODE:  
**ABIT10**

# The work behind the win

Nutrition supports performance long before the spotlight.

Feed isn't just fuel. It's a performance strategy.

Every ride leads somewhere. Every decision shapes the moment you've been working toward. Show horses require nutrition that works with their physiology. Controlled energy, targeted amino acids, digestive efficiency, and recovery support all play a role in keeping performance horses at the top of their game. When nutrition is dialed in, horses stay sharper, stronger, and more resilient through demanding training and competition schedules.

 **Masterfeeds**® Equine Nutrition

*Designed for horses that compete to win.*



 MANUFACTURED IN CANADA

# SHOW FEES

# GOLD CALEDON

<b>*Stall Request   Hay and Shavings must be booked via <a href="https://entries.equestrian.digital">entries.equestrian.digital</a></b>			<b>*All price + HST</b>
<b>Facility Fee/Emergency Fee</b>			<b>\$99.00</b>
<b>Administrative Fee</b>			<b>\$65.00</b>
<b>Biosecurity Fee</b> (mandatory)			<b>\$3.00</b>
<b>Jump Canada Levy</b>			<b>\$25.00</b>
<b>Jumper Nomination Fee</b> (Required for 1.10m & higher)			<b>\$175.00</b>
<b>EC Gold Drug Fee</b>			<b>\$8.00</b>
<b>NSF Fee</b> (Non-sufficient-funds / See Rules and Regulations)			<b>\$60.00</b>
<b>Stalls</b>	<b>Circuit</b>	<b>Tier 1 - Indoor Stalls</b> (matted) SEASONAL ONLY	<b>\$1,700.00</b>
		<b>Tier 2 - A Block</b> (matted, new stalls)	<b>\$1,000.00</b>
		<b>Tier 3 - B Block</b> (matted, original stalls)	<b>\$800.00</b>
	<b>Weekly</b>	<b>Tier 1 - Indoor Stalls</b> (matted) SEASONAL ONLY	<b>\$450.00</b>
		<b>Tier 2 - A Block</b> (matted, new stalls)	<b>\$295.00</b>
		<b>Tier 3 - B Block</b> (matted, original stalls)	<b>\$235.00</b>
<b>Hay</b> (per bale)			<b>\$18.00</b>
<b>Shavings</b> (per bag)			<b>\$12.50</b>
<b>Post Entry Fee</b> (See Rules & Regulations under Closing Date)			<b>\$75.00</b>
<b>Day of Add Fee</b>			<b>\$10.00</b>
<b>Camper Fees (both venues)</b> (See Rules and Regulations)			<b>\$375.00</b>





RIDE EVERY STRIDE INC.

**Made for you.**

Beautifully branded products to compliment your equestrian lifestyle.

- Stable Accessories
- Custom Horse Blankets
- Engraved Products
- VIP Event Material
- Branding & Marketing
- Custom Apparel
- Promotional Products
- Horse Show Prizes

[rideeverystride.com](http://rideeverystride.com)

# RULES & REGULATIONS (1/2)

The Angelstone International Show Jumping Tournaments/Events are EC Sanctioned Gold/Platinum competitions members of Equestrian Canada and are governed by the rules of the EC Rule Book.

(A602.9) When registering for EC sanctioned competitions, athletes must indicate the name of their coach on the entry form or specify that they are self coached. Coaches from other countries must be in good-standing with their home federation and must declare/have proof of insurance. See Rules of Equestrian Canada, Section A, General Regulations, Article 102, Safe Sport Environments.

(A602.2) Every class offered herein which is covered by the rules and specifications of the current rules of EC Rules and will be held and judged in accordance with the EC Rule Book all questions not covered by these rules shall be decided by the show management, whose decision will be final.

(A602.5) Any horse entered in any class at a competition may, may be selected for equine medication control while at the event location.

(A602.7) Per Article A801, every entry at an EC sanctioned competition shall constitute an agreement by the person(s) responsible that the owner, lessee, trainer, manager, agent, coach, driver or rider and horse shall be subject to the EC constitution and all rules of EC and any additional rules set by the competition. It is the responsibility of all individuals participation in any capacity in EC sanctioned competitions to be knowledgeable regarding the EC constitution and the applicable rules of EC and the additional rules, if any, imposed by the competition. Do not participate in this EC sanctioned competition in any capacity if you do not consent to be bound by the constitution and rules of EC and any other additional rules imposed by the competition.

(A602.8) All horses attending Equestrian Canada sanctioned competitions must have met the requirements of Article A519, Vaccinations See Rules of Equestrian Canada, Section A, General Regulations, Article A519, Vaccinations.

**Competition Days** – Office will open one hour before the first class and declarations for the next day's classes will close at 4:00 pm (Remember there is no fee for the day of scratches, but there is a \$10 fee for the day of adds). This is to allow time for management to schedule the following competition day and make changes online. All changes for the following day will be posted online NO LATER than 10:00 pm.

**Non-Competition Days** – Monday: Closed / Tuesday: 9:00 am to 4:00 pm.

**Schedule** – Schedule will be updated online by 10:00 pm the evening before the competition day. Management reserves the right to move classes up an additional 30 minutes from the time posted online. The show management further reserves the right to cancel, postpone, or combine any class or condition they deem advisable without notification. Every effort will be made to provide as much notification as possible

**Entries** – Entries accepted only through Equestre Digital (Angelstone app). All entries must have complete address, EC or USEF numbers, and horse recording numbers. It is the responsibility of the exhibitor to provide proof of all necessary memberships. Any exhibitor competing without proper memberships will not be allowed to compete unless they attain an Equestrian Canada membership or proof of their Federation membership.

Numbers will not be issued until entry information is complete and a form of payment is left with the office (Visa, MasterCard or check). All accounts must be closed out each Sunday of the event.

Entry Numbers must be worn and visible at all times while mounted. The official number provided by the horse show must be used – no bib numbers.

All competitors will be assessed on a per horse basis the: EC Drug Fee of \$8, JC Levy \$25 & \$95 Facility / Emergency Fee.

**Non-showing Horse** - Non-showing horses must still be entered through Equestrian Digital and issued a back number. Non-showing horses are subject to an administration fee, but not a non-showing fee.

**Closing Date** – The closing date for all entries is 14 days prior to the first day of the competition. All entries must be completed online with Equestre Digital (Angelstone app). Entries not received by this day will be subject to a late fee of \$50. Entries submitted on or after Monday of the show week are subject to \$75 fee. Entries may not be accepted if the Tournament has reached capacity

**Add / Scratch** – Class adds on the day of competition will be subject to a \$10 additional fee. This is to allow us to make a proper schedule and start times the evening before. Scratches will have NO FEE if scratched before the first horse competes in the class to which the exhibitor is scratching. After the first horse has competed there will be no refunds.

**Ticketed Hunter Schooling** – Hunter rings will be open for ticketed schooling at the end of show days during the week when schedule allows. Horse/Rider must be wearing the current number or will not be permitted to enter rings. Schooling tickets will be billed to back numbers entering rings at \$40.

**Payments** – We require a valid Visa, MasterCard or blank cheque for ALL open accounts at the time the back numbers are picked up. 3% convenience fee is charged on all credit card transactions. No fee is charged for debit, cash, check or e-transfer payments. All accounts must be closed out each Sunday before competing the following week. All accounts not closed out by 12pm the following Monday will be subject to a 3% late close out fee.

# RULES & REGULATIONS (2/2)

**Prize Money** – Prize money will be credited against all accounts. Any prize money amount under \$1,000 will be left as a credit on account and automatically rolled forward to the next event unless a payout is specifically requested. Prize money will be paid to the registered “payee” on the show entry, which must have a correct mailing address listed, within 30 days following the end of competition event.

**Refunds** – All show scratches will be subject to a \$65 office fee and a \$75 scratch fee. Stalls are not refundable. Refunds will not be granted on Jumper Nomination after entry closing date but will be granted on all entry fees if the scratch is made before the class starts.

**Cash Customers** – If you have presented a non-negotiable cheque to Angelstone Tournaments/Events, you may be considered as a “cash only” customer. Entries and stall reservations will not be accepted until cash payment has been received. Management reserves the right to refuse entries.

**Non-Negotiable Cheques** – Cheques returned by the bank for any reason will be charged a \$60 NSF Fee.

**Jumpers** – Must pay \$175 Jumper nomination unless competing in a division or class that does not require a nomination. The nomination fee is non-refundable. Jumper nomination fee required for 1.10m and up.

**Insurance** – All owners and competitors are personally responsible for damages to a third party caused by themselves, their employees, agents or their horses. They are strongly advised to take out a third party insurance policy covering equestrian events.

**Dogs** – Dogs MUST be kept on a leash at all times while on the property. There will be a \$100 fine for any disruption to competition caused by a loose dog. Owners are responsible for picking up after their dogs at both venues.

**Vehicles** - All vehicles must be parked in designated areas only. There is no parking on the roads or in the barn areas at any time. All motorized vehicles including golf carts, dirt bikes, 4-wheelers, etc. must be operated by Fully Licensed Drivers Only. Unlicensed Drivers will be issued a warning on their first offense. Additional offenses will be fined \$250 per violation. Cars parked in the stabling area will be fined \$100 per violation.

## STALLS & CAMPERS

**\* Stall Request | Hay & Shaving - All orders are done through Equestre Digital (Angelstone app).**

**Stabling** – Stabling is limited. Prices do not include shavings. Please pre-order shavings and hay by Friday before an event to ensure they are at your assigned stall location upon arrival. Exhibitors will be responsible for all stall reservations if not changed or canceled within 14 days of the start of the show. Cross ties are not permitted in aisle ways.

Weekly Stalls - FEI Barn \$350 / A Block \$295 / B Block \$235 (All stalls are matted)

Stalls are being offered complimentary for showing horses for the \*Great Pony Challenge & Stewart's Equipment Cup.

Complimentary stalls must be reserved via the paper form before March 1st.

Stall Upgrades this show: FEI \$150, Regular Shedrow - \$60 \*Tack stalls will be regular stall pricing\*

**GRAND PRIX HORSES MUST BE STABLED ON THE GROUNDS 24 HOURS PRIOR TO ANY CLASS OF \$25,000 OR MORE.**

Stalls are available no earlier than 12:00 Noon the Monday of each competition week. Please contact the show office to organize earlier arrival if needed.

**Stabling Splits / Trainer Splits** – All trainer accounts not split by noon on **FRIDAY** of the current competition week will be billed in full to trainers. No exceptions. Hay/Shavings orders submitted after stall splits will be split evenly amongst the horse list unless clearly specified on the order form.

**Feed and Bedding Orders** – Must be made by 12:00 Noon to ensure same-day delivery. Orders for the show end on Saturday at 10:00 am.

**Manure** – Manure must be dumped at the designated area. Manure dumping fine: \$100.

**Wash Racks** – Horses must be washed/hosed in designated areas only.

**Campers** – Camper bookings will open online 2 weeks prior to events. \$75 deposit is required to book. Deposits will NOT be refunded if canceled. Check camper chart online before your arrival. Please note that your camper can be moved if you parked on the wrong spot.

### Angelstone Show Grounds

- Rate: \$375/week + HST
- Services: 30amp permanent power & water
- Availability: 80 spots / first come first serve basis

### CEP Show Grounds

- Rate: \$375/week + HST
- Services: 30/50amp permanent power & water
- Availability: 70 spots / first come first serve basis

**ON-SITE CAMPGROUND RULES & REGULATIONS (Terms and Conditions) are available on the registration form.**

The show management further reserves the right to cancel, postpone, change or reschedule any class or condition they deem advisable without notification.

The show management reserves the right to cancel the hunter schooling class when entries exceed two hundred trips in one day in any given ring.

VISIT  
**GREENHAWK**<sup>®</sup>  
EQUESTRIAN SPORT

at Angelstone Tournaments  
and Caledon Equestrian Park



# THE VENUE

## CALEDON EQUESTRIAN PARK

Address: 200 Pine Ave, Caledon, Ontario L7E 0M1 CANADA



The equestrian jewel of eastern Canada is located in Palgrave, Ontario. Caledon Equestrian Park is now home annually to dozens of the most prestigious equestrian events in Canada. It offers temporary accommodations for nearly 1,000 horses and has 5 international competition rings. The park also provides first-class facilities for the many competitors from all over the world as well as those living within Canada's largest horse community (the Caledon/King corridor).

The Caledon Equestrian Park was selected as the equestrian venue by the 2015 Pan American Games. The venue now serves the community and the sport and will continue for many years to come. Horse lovers from around the world visit the region and enjoy the many wonderful activities that the area has to offer. As originally hoped, the Caledon Equestrian Park is now a major "Destination" in the Hills of Headwaters.

- 4 outside all-weather rings and warm-up areas
- 2 natural sand rings and warm-up areas
- Largest indoor competition ring and warm-up ring in Ontario
- 1,000 stalls
- Full service restaurants on the site
- Certified Chef de Cuisine and professional wait and kitchen staff
- Fully licensed Leon's lounge overlooking the International ring
- Patio and lounge areas
- Climate-controlled meeting, seminar and breakout areas
- The Palgrave Room with seating capacity of 120





# CALEDON EQUESTRIAN PARK

PALGRAVE, ONTARIO

MOUNT HOPE RD.

TRAILER PARKING

SERVICE AREA & DELIVERIES

SHIP-IN PARKING

SHIP-IN PARKING

PINE AVE.

## NORTH ENTRANCE

49 BUCKSTOWN TRAIL  
TRUCKS/TRAILERS/RV/DELIVERIES

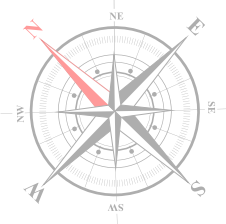
BUCKSTOWN TRAIL

## MAIN ENTRANCE

200 PINE AVE

- 1 Main Stadium
- 2 Kubota Annex Jumper Ring
- 3 Meilsoe Hunter Ring (H1)
- 4 Warm-Up Rings
- 5 BFL Hunter Ring (H2)
- 6 Future development
- 7 Hack / Lunge
- 8 Stabling
- 9 RV Area
- 10 Leon's Lounge
- 11 Pavillion Grandstand
- 12 Ringside Boxes
- 13 Vendor Area
- 14 Indoor Arena Complex
- 15 Show Office
- 16 Indoor Stabling
- 17 FEI Stabling
- 18 Judges Tower
- 19 Vet / Farrier / Golf Cart Rental

- Parking
- Handicap Parking
- Restaurant
- Manure



HIGHWAY 50 (QUEEN STREET)



**Leon's**

FANS OF ANGELSTONE EVENTS RECEIVE

**10% OFF**

**ALL REGULAR PRICED FURNITURE**

# HUNTER DIVISIONS (1/3)

## Schooling Hunter

Open to all - Show Management reserves the right to cancel the hunter schooling class when entries are insufficient. Schooling classes may be added throughout the week time permitting. To run on open card. Height to change throughout the day with each division height. To be pinned at the end of each day.

- Class #1, 2, 3, 4, 5, 6 Ribbons to eighth
- Entry Fee: \$45 per class

## Low Schooling Hunter – Fences 2'0" & 2'3" & 2'6"

- 2'0" Class #7, 8, 9, 10 Over Fences Ribbons to eighth
- 2'0" Class #11 Under Saddle Ribbons to eighth
- 2'3" Class #12, 13, 14, 15 Over Fences Ribbons to eighth
- 2'3" Class #16 Under Saddle Ribbons to eighth
- 2'6" Class #17, 18, 19, 20 Over Fences Ribbons to eighth
- 2'6" Class #21 Under Saddle Ribbons to eighth

Entry Fee: \$45 per class

## Low Hunter - Fences 2'9" - Open to all horses. Will run concurrently with the Baby Green Hunters.

- Class #23, 24, 25 Over Fences Ribbons to eighth
- Class #26 Under Saddle Ribbons to eighth

Entry Fee: \$45 per class

## \$1,600 Baby Green Hunter – Fences 2'9"

Open to horses that have not competed in an EC sanctioned Gold or Silver competition (or equivalent) in any class requiring the entry to jump 2'9" prior to January 1<sup>st</sup> of the current year. To maintain their Baby Green Status, horses may not compete in any division in which the jumps exceed 2'9".

- Class #27, 28, 29 Over Fences \$350
- Class #31 Under Saddle \$200

Entry Fee: \$295

## \$1,600 Pre-Green Hunter Low and High – Fences 3'0" Low / 3'3" High

**Low** – A first-year pre-green horse is one that has not competed in an EC sanctioned Gold or Silver competition (or equivalent) in any classes requiring the entry to jump over 2'9" (0.85m) prior to January 1<sup>st</sup> of the current year.

**High** – A second-year pre-green horse is one that has not competed in an EC-sanctioned Gold or Silver competition (or equivalent) in any classes requiring the entry to jump over 3' (0.90m) prior to January 1<sup>st</sup> of the current year. If there are less than 8 entries in either section, sections will be combined.

- Class #32, 33, 34, 35 Over Fences \$350
- Class #36 Under Saddle \$200

Entry Fee: \$295

## \$1,600 High Performance – Fences 3'3" & 3'6" - Open to all horses

- Class #37, 38, 39, 40 Over Fences \$350
- Class #41 Under Saddle \$200

Entry Fee: \$60 per class

## \$1,600 Combined Working Hunter – Fences First year 3'6" / Second year 3'9" / Regular Working 4'0" - Open to all horses

- Class #42, 43, 44, 45 Over Fences \$350
- Class #46 Under Saddle \$200

Entry Fee: \$295

# HUNTER DIVISIONS (2/3)

## \$1,600 Adult Amateur Working Hunter – Fences 3'0

• Class #47, 48, 49, 50	Over Fences	\$350
• Class #51	Under Saddle	\$200
Entry Fee: \$295		

## \$1,600 Children's Working Hunter – Fences 3'0

• Class #52, 53, 54, 55	Over Fences	\$350
• Class #56	Under Saddle	\$200
Entry Fee: \$295		

## \$1,600 Amateur Owner Hunter 3'0 – Fences 3'0

• Class #57, 58, 59, 60	Over Fences	\$350
• Class #61	Under Saddle	\$200
Entry Fee: \$295		

## \$1,600 Amateur Owner Hunter 3'6" – Fences 3'6"

• Class #62, 63, 64, 65	Over Fences	\$350
• Class #66	Under Saddle	\$200
Entry Fee: \$295		

## \$1,600 Junior Working Hunter – Fences 3'6"

• Class #67, 68, 69, 70	Over Fences	\$350
• Class #71	Under Saddle	\$200
Entry Fee: \$295		

## Junior/Amateur Hunter 2'6" – Fences 2'6"

Open to all Junior and Amateur riders. Courses will be made up of hunter style jumps and be set at a height not to exceed 2'6". Horse/Rider combinations may not cross enter any division requiring them to jump higher than 2'9". Showing in this division will affect a horse's eligibility.

• Class #72, 73, 74	Over Fences	Ribbons to eighth
• Class #75	Under Saddle	Ribbons to eighth
Entry Fee: \$95		

## Beginner Children's/Adult – Fences 2'6"

A beginner hunter is a rider who has NEVER won 6 first place ribbons over fences at any EC of USEF competition (Provincial competitions and Combined Training not to count). These wins are LIFETIME achievements. Schooling Non-Pro and Short Stirrup not to count.

• Class #76, 77, 78	Over Fences	Ribbons to eighth
• Class #79	Under Saddle	Ribbons to eighth
Entry Fee: \$95		

## Low Children's/Adult – Fences 2'9"

Horse/Rider combinations may not cross enter at the same show into any Hunter Division with heights exceeding 2'9", any Jumper Classes with heights exceeding 1.0m or any equitation classes with heights exceeding 3'. Showing in this division will affect a Horse's eligibility.

• Class #80, 81, 82	Over Fences	Ribbons to eighth
• Class #83	Under Saddle	Ribbons to eighth
Entry Fee: \$95		

## \$1,600 Low Junior/Amateur 3'3" Hunter – Fences 3'3"

• Class #84, 85, 86, 87	Over Fences	\$350
• Class #88	Under Saddle	\$200
Entry Fee: \$295		

# HUNTER DIVISIONS (3/3)

## **\$1,600 Large Pony Hunter** – Fences 2'9"

- Class #89, 90, 91, 92
- Class #93

Over Fences	\$350
Under Saddle	\$200

Entry Fee: \$295

## **\$1,600 Medium Pony Hunter** – Fences 2'6"

- Class #94, 95, 96, 97
- Class #98

Over Fences	\$350
Under Saddle	\$200

Entry Fee: \$295

## **\$1,600 Small Pony Hunter** – Fences 2'3"

- Class #99, 100, 101, 102
- Class #103

Over Fences	\$350
Under Saddle	\$200

Entry Fee: \$295

## **Children's Pony** – Fences Small & Medium 2'0 / Large 2'6"

A combined pony division open to all ponies ridden by a junior. Lines will be set on a 12' stride. No in and out. Judged on quality, movement, jumping style, manners, and way of going. The division does not affect Green Pony status. Ponies and riders may cross enter into any other division they may be eligible for.

- Class #104, 105, 106
- Class #107

Over Fences	Ribbons to eighth
Under Saddle	Ribbons to eighth

Entry Fee: \$95

## **Short/Long Stirrup** – Fences 2'0

Open to all horse/rider combinations where the rider does not show in other classes that require them to jump. Short Stirrup is limited to junior "C" riders. Horses and ponies may show in other classes with a different rider. As entries warrant, Short and Long Stirrup may be combined. 2<sup>nd</sup> vertical division is the only other division short/long stirrup rider combinations can show.

- Class #108, 109
- Class #110

Over Fences	Ribbons to eighth
Under Saddle	Ribbons to eighth

Entry Fee: \$85

## **Walk/Trot & Walk/Trot/Canter Equitation**

Open to Riders 11 and Under. May cross enter into Flat Equitation only and Short Stirrup/Crossrails and Poles Divisions. Long Stirrup is not eligible.

- Class #111
- Class #112

Walk / Trot	Ribbons to eighth
Walk / Trot / Canter	Ribbons to eighth

Entry Fee: \$40 per class

## **Crossrails** – Fences 18"

Open to all riders, adults are encouraged to enter. Riders are not eligible to compete in any other classes at the same show except any other flat classes that the rider may be eligible for (Walk/Trot, Walk/Trot/Canter). Riders to trot or canter the course without penalty. The under saddle will show at only the walk and trot.

- Class #113, 114
- Class #115

Over Fences	Ribbons to eighth
Under Saddle	Ribbons to eighth

Entry Fee: \$85

## **Pole Division**

Open to all junior riders. Riders are not eligible in any other classes at the same show except walk/trot and w/t/c or the Cross Rail division. Riders to trot or canter the course without penalty. The under saddle will show at the walk and trot.

- Class #116 Equitation Over Poles
- Class #117 Hunter Over Poles
- Class #118 Walk/Trot Under Saddle

Division fee: \$85

## **Flat Division** - Open to all horses. Additional requirements of Show Hack will be collected and extended gaits.

- Class #126 Show Hack
- Class #127 Pleasure Hack

Division fee: \$50



# SPECIAL HUNTER CLASSES (2/2)

## 2026 Young Hunter Development Series (CEP 1, 4)

Open to horses 6 years and under who have never competed over 2'9".  
The top 15 in the regular season standings will qualify for the final. No entry fee for qualified horses

1. • #121 Model - Class
2. • #122 Under Saddle
3. • #123 2'3"/2'6" Over Fences
4. • #124 Schooling Over Fences

Entry Fee: \$150

Prize Money Weekly - Gold \$500 / Silver \$300 / Bronze \$200

## \$2,000 3'0/3'3"/3'6" Junior/Amateur Hunter Classic Series (2026 \$24,000 Series) (CEP 1, 4)

Rules: One round. At least 10 fences. Fences 3'0, 3'3" & 3'6. Open to 3'0, 3'3" & 3'6 Juniors and Amateur riders who compete in the Adult Amateur, Children's Hunter, Junior/Amateur 3'3", Junior hunter 3'6", Amateur Owner 3'6". Series composed of 7 Qualifiers & Final. Refer to weekly offerings for events where this competition will be offered. Entries must compete in the corresponding division at the same event.

The classic may contain, multiple single jumps, roll backs, bending lines or longer lines. Judged numerically out of 100 on quality, movement, jumping style, manners, and way of going. To be judged on quality, movement, jumping style, handiness, manners, and way of going. Pace and brilliance are to be rewarded.

- Class #507

Entry Fee: \$150

## \$1,000 Pony Hunter Classic Series (2026 \$10,000 Series) (CEP 2, 4)

Rules: One round. The course will be set at appropriate pony heights with a minimum of 10 jumps. Fences 2'3"/2'6"/2'9. Judged numerically out of 100 on quality, movement, jumping style, manners, and way of going.

- Class #508

Entry Fee: \$95

## \$1,000 Pony Derby Series (2026 \$10,000 Series) (CEP 1, 3)

Fences 2'3"/2'6"/2'9. The course will be set at appropriate pony heights with a minimum of 10 jumps. Rules: Hunt and Go Format. The Hunt and Go format will consist of two phases, one Classic Hunter and one Handy Hunter. The Classic Hunter phase consisting of 5-7 fences, shall be judged on quality, movement, jumping style, manners and way of going. After the completion of the first phase ponies will pass through a set of markers to begin their handy portion of the class. The Handy Hunter Round, consisting of 5-7 fences, pace, brilliance, and a shorter track are to be rewarded.

- Class #508

Entry Fee: \$95

## \$1,000 2'6"/2'9" Beginner Child/Adult / Low Child/Adult / Low Jr/Am Classic (CEP 1)

Held at select shows. Open to all riders who compete in the beginner, low or Jr/Am 2'6 or 2'9 divisions. One round hunter classic judged at two heights.

- Class #509

Entry Fee: \$95

## \$1,000 LongRun TB Hunter Challenge presented by Chiefswood Aftercare (CEP 1, 4)

Open to all Thoroughbreds with a valid tattoo or papers from The Jockey Club or CTHS. Copy of the papers must be provided to the Horse Show Office or Tattoo verified by Show Vet/Steward. Horses may be ridden by amateur or pro riders. The derby will be offered at 2 heights 2'6" & 2'9". Course will include hunter classic, handy hunter, and field hunting fences. Bonus points will be available for use of options and additional bonus points will be available for handiness at the judge's discretion. Winner will receive a cooler, prize money & ribbons to 6th.

- Class #510

Entry Fee: \$95

## **OHJA Pony Power Series:** One event at each set of shows. Finals at Greenhawk Cup.

The Handy course could consist of: rollback, trot fence, hand gallop fence, bending line, halt, option fence, bounce, direct line to/from a to the in-gate. Open numerical scoring is required. Scoring will be based on traditional hunter criteria with an emphasis on style and handiness. Ponies will be required to jog.

We will provide special ribbons and prizes to be presented to the class winners. The Pony Power Series is intended to encourage the use of the Open Numerical Scoring System for both the enjoyment and education of the exhibitors and spectators. Formal attire is optional.

There will be a final for those qualifying in the EC Small, Medium and Large Pony Power Series Qualifiers. Qualified entries will have won a 1st, 2nd, 3rd or 4th place ribbon in at least one EC Small, Medium, and Large division Pony Power Class. Provincial Award points will be awarded in the qualifiers but not the Finals.

# Quality Wood Shavings

Small, Medium or  
Large flakes available

All shavings are  
100% dust screened  
and kiln dried

Our product ships  
Floor Loaded,  
Palletized or in Bulk.



Call today for your free quote!

1-800-838-8002

[www.championshavings.com](http://www.championshavings.com)



Excellence in International Horse Shipping

horseflight .com

# Fly First Class

Transporting the competitive horse world,  
one flight at a time.

[horseflight.com](https://horseflight.com)

+1(844)832-5848

✉ [team@horseflight.com](mailto:team@horseflight.com)

📍 Califon, NJ | Wellington, FL | Ocala, FL



# EQUITATION CLASSES

Offered at CEP 1 & 2 (1/2)

**Jump Canada Medal Regional Final** (CEP 1) (G1105) 3'6" Open to Junior riders.

- Class #156

Entry Fee: \$60

**CET Medal Regional Final** (CEP 1) (G1109) Jumping course 1.10m-1.15m. CET Medal (Article G1111) Open to riders until the end of the year in which they reach 21. CET membership mandatory.

- Class #157

Entry Fee: \$60

**Canadian Open Gymnastics Medal Final** (CEP 2) 1.10m Open to Junior & Amateur riders. Jumping phase will include a gymnastic element.

- Class #159

Entry Fee: \$75

## CET Mini Medal

Class will be held under same rules and regulations as the CET Medal.

Jumping Phase - maximum 1.0m

Gymnastics Phase - maximum 0.90m

Riders cannot cross enter between mini medal and CET medal at the same competition.

- Class #160

Entry Fee: \$60

## Ride Every Stride Medals+

To be shown over a course of eight or more hunter type fences with at least two changes of directions and including at least two tests (see EC rules A G1009: Tests).

**Junior:** Open to Junior riders. Fences 3'6"

**Children's:** Open to Junior riders. Fences 3'0. Riders are not allowed to cross enter into Jumper classes exceeding 3'9" (1.20m), Hunter or Equitation classes exceeding 3'3".

**Amateur:** Open to Amateur riders. Fences 3'0

**Pony:** Open to Junior riders. 'A' riders restricted to Large ponies, 'B' and 'C' riders permitted on all ponies sizes.

Fence heights and distances to be adjusted for respective pony sizes.

- **161 Ride Every Stride Small Pony Medal** Entry Fee: \$50
- **162 Ride Every Stride Medium Pony Medal** Entry Fee: \$50
- **163 Ride Every Stride Large Pony Medal** Entry Fee: \$50
- **164 Ride Every Stride Children's Medal 3'3"** Entry Fee: \$50
- **165 Ride Every Stride Adult Medal 3'0** Entry Fee: \$50
- **166 Ride Every Stride Junior Medal 3'6"** Entry Fee: \$50
- **167 Ride Every Stride Amateur Medal 3'6"** Entry Fee: \$50

## Emerging Rider Medals

To be shown over a course of eight or more hunter type fences with at least two changes of directions and including at least one of the following tests: halt, trot fence, rollback, bending line.

**Short Stirrup:** Open to all riders eligible for the short-stirrup division

**Children's Pony:** Open to all riders eligible to compete in the Children's Pony Division.

Riders competing in the Pony Medals are not eligible to participate.

**Beginner Children's & Adult:** Open to all riders eligible for the beginner child/adult division.

- **170 Ride Every Stride Short Stirrup Medal** Entry Fee: \$50
- **172 Ride Every Stride Beginner Children's/Adult Medal** Entry Fee: \$50
- **173 Ride Every Stride Low Children's/Adult Medal** Entry Fee: \$50

# EQUITATION CLASSES (2/2)

Finals (Information Purposes)

**Medals Finals @ The Outdoor Finale** - Entry Fee: \$75

The top 20 riders from each of the Ride Every Stride Medals will be eligible to compete. The top 4 in each medal Final will return for a ride-off.

## **\$5,000 Canadian Open Medal 1.10m Final**

This is intended to prepare athletes for medal finals. The round will be a typical jumping phase, over a Grand Prix type course, with a gymnastic element. Athletes will be penalized 1 point for every second or commenced second they are over the time allowed.

## **\$5,000 Bursary Final**

Athletes will earn points at all qualifying competitions. Points are based on entries in the competition.

The top 20 athletes (plus ties) will qualify for the final. Points at the final will be worth double. Riders must compete at final to be eligible for bursaries. Bursaries after the final will be awarded to the following based on total points earned all season:

Canadian Open 1st - \$2,000 / 2nd - \$1,500 / 3rd - \$500 / Winner of the final - \$1,000

- Class #158      Canadian Open Gymnastic Medal



*Wishing everyone a safe show season full of growth, success, and memorable moments*

WILLOW

MODERN LUXURY  
MADE ATTAINABLE

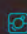
SHOP OUR LOCATIONS AT  
CALEDON AND ANGELSTONE

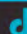
[WWW.WILLOWEQUESTRIAN.COM](http://WWW.WILLOWEQUESTRIAN.COM)

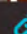
VOLTAIRE  
DESIGN



DANIEL COYLE & LEGACY

 @voltairedesignusa\_can

 @voltairedesign

 [VoltaireDesign.com](http://VoltaireDesign.com)



**CWD**

We care. You ride.



**ANTARÈS** ( Riding is an Art.  
SELLIER FRANCE



S E L L I E R - F R A N C E



## VISIT US

### TASTING ROOM HOURS:

Monday- Sunday 11:00AM-5:00PM

ONLINE AT: [2027cellars.ca](http://2027cellars.ca)

TASTINGS | PATIO | BISTRO | HIKING

# 2027

C E L L A R S

Angelstone Competitors Enjoy 10% off with code

**ANGELSTONE10**

3100 Glen Road Jordan Station, Ontario, LOR 1S0

CALL US: 905-562-5050 | EMAIL US: [ORDERS@2027CELLARS.CA](mailto:ORDERS@2027CELLARS.CA)

# JUMPER DIVISIONS (1/2)

\*Jumper Divisions FEI Rules: Classics (II.2b Immediate JO (USEF II.2b)), Speed (Art. 220.2.1.1), Two Phase (Art. 222.2.3)

## Schooling 0.6m – Max height 0.6m

- Class #201,202,203,204,205

## Schooling 0.75m – Max height 0.75m / Max width 0.80m

- Class #206,207,208,209,210

## Schooling 0.9m – Max height 0.9m / Max width 1.0m

- Class #211,212,213,214,215

## Schooling 1.0m – Max height 1.0m / Max width 1.10m

- Class #216,217,218,219,220

## Schooling 1.10m – Max height 1.10m / Max width 1.20m

- Class #221,222,223,224,225

Schooling Class Entry Fee: \$40/Class

Clear Round Ribbons

## 0.60m Jumper – Max height 0.6m - Open with the exception of classics being open to Jr/Am ONLY

- Class #230 Table A Speed
- Class #231 Two Phase
- Class #232 Table A Speed
- Class #233 \$500 Jr/Am Table A Classic

Entry Fee: \$40/Class | \$75/Classic

Ribbons to eighth

## 0.75m Jumper – Max height 0.75m / Max width 0.8m - Open with the exception of classics being open to Jr/Am ONLY

- Class #234 Table A Speed
- Class #235 Two Phase
- Class #236 Table A Speed
- Class #237 \$500 Jr/Am Table A Classic

Entry Fee: \$40/Class | \$75/Classic

Ribbons to eighth

## 0.9m Jumper – Max height 0.9m / Max width 1.00m - Open with the exception of classics being open to Jr/Am ONLY

- Class #238 Table A Speed
- Class #239 Two Phase
- Class #240 Table A Speed
- Class #241 \$750 Jr/Am Table A Classic

Entry Fee: \$40/Class | \$95/Classic

Ribbons to eighth

## 1.0m Jumper – Max height 1.00m / Max width 1.10m - Open with the exception of classics being open to Jr/Am ONLY

- Class #242 Table A Speed
- Class #243 Two Phase
- Class #244 Table A Speed
- Class #245 \$750 Jr/Am Table A Classic

Entry Fee: \$40/Class | \$95/Classic

Ribbons to eighth

## 1.10m – Max height 1.10m / Max width 1.20m - Open with the exception of classics being open to Jr/Am ONLY

- Class #246 \$500 Table A Speed Entry Fee: \$70
- Class #247 \$500 Two Phase Entry Fee: \$70
- Class #248 \$1,000 Jr/Am Table A Classic (week 1&3) Entry Fee: \$125
- Class #248 \$2,500 Jr/Am Table A Classic (week 2&4) Entry Fee: \$175

# JUMPER DIVISIONS (2/2)

\*Jumper Divisions FEI Rules: Classics (II.2b Immediate JO (USEF II.2b)), Speed (Art. 220.2.1.1), Two Phase (Art. 222.2.3)

## Junior/Amateur 1.20m – Max height 1.20m / Max width 1.30m

- |              |                                    |                  |
|--------------|------------------------------------|------------------|
| • Class #249 | \$500 Table A Speed                | Entry Fee: \$70  |
| • Class #250 | \$500 Two Phase (Art. 274.2.5)     | Entry Fee: \$70  |
| • Class #251 | \$2,500 Table A Classic (week 1&3) | Entry Fee: \$175 |
| • Class #251 | \$5,000 Table A Classic (week 2&4) | Entry Fee: \$300 |

## Junior/Amateur 1.30m – Max height 1.30m / Max width 1.40m

- |              |                                    |                  |
|--------------|------------------------------------|------------------|
| • Class #252 | \$500 Table A Speed                | Entry Fee: \$70  |
| • Class #253 | \$500 Two Phase (Art. 274.2.5)     | Entry Fee: \$70  |
| • Class #254 | \$2,500 Table A Classic (week 1&3) | Entry Fee: \$175 |
| • Class #254 | \$5,000 Table A Classic (week 2&4) | Entry Fee: \$300 |

## Junior/Amateur 1.40m – Max height 1.40m / Max width 1.50m

- |              |                                    |                  |
|--------------|------------------------------------|------------------|
| • Class #255 | \$500 Table A Speed                | Entry Fee: \$70  |
| • Class #256 | \$500 Two Phase (Art. 274.2.5)     | Entry Fee: \$70  |
| • Class #257 | \$2,500 Table A Classic (week 1&3) | Entry Fee: \$175 |
| • Class #257 | \$5,000 Table A Classic (week 2&4) | Entry Fee: \$300 |

\*1.30m and 1.40m will be combined if either division has less than 8 entries.

## Open Jumper 1.15m – Max height 1.15m / Max width 1.25m

- |              |                                |                  |
|--------------|--------------------------------|------------------|
| • Class #258 | \$500 Table A Speed            | Entry Fee: \$70  |
| • Class #259 | \$500 Two Phase (Art. 274.2.5) | Entry Fee: \$70  |
| • Class #260 | \$1,500 Table A Jump-Off       | Entry Fee: \$125 |

## Open Jumper 1.25m – Max height 1.25m / Max width 1.35m

- |              |                                  |                        |
|--------------|----------------------------------|------------------------|
| • Class #261 | \$750 Table A Speed              | Entry Fee: \$70        |
| • Class #262 | \$750 Two Phase (Art. 274.2.5)   | Entry Fee: \$70        |
| • Class #263 | \$2,500/\$5,000 Table A Jump-Off | Entry Fee: \$175/\$300 |

## Open Jumper 1.35m – Max height 1.35m / Max width 1.45m

- |              |                                  |                        |
|--------------|----------------------------------|------------------------|
| • Class #264 | \$750 Table A Speed              | Entry Fee: \$75        |
| • Class #265 | \$750 Two Phase (Art. 274.2.5)   | Entry Fee: \$75        |
| • Class #266 | \$2,500/\$5,000 Table A Jump-Off | Entry Fee: \$175/\$300 |

# CAROLYN SCIME

DISTINCTIVE PROPERTIES — TOWN & COUNTRY

AURORA – KING – CALEDON – MONO – MULMUR



[www.cscime.com](http://www.cscime.com)

 @carolyn\_scime

[carolyn@chestnutpark.com](mailto:carolyn@chestnutpark.com)  
(519) 316-9797

  
CHESTNUT PARK  
REAL ESTATE BROKERAGE  
CHRISTIE'S  
INTERNATIONAL REAL ESTATE

# SPECIAL JUMPER CLASSES

<b>\$10,000 Open Welcome 1.35m</b> (Rules: Table A, Art 220.2.1.2)	• Class #700	Entry Fee: \$500
<b>\$5,000 Modified Grand Prix 1.30-1.35m</b> (Rules: Table A, Art 220.2.1.2) (CEP 1,3)	• Class #601	Entry Fee: \$300
<b>\$10,000 Modified Grand Prix 1.30-1.35m</b> (Rules: Table A, Art 220.2.1.2) (CEP 2,4)	• Class #602	Entry Fee: \$500
<b>\$25,000 Saturday Grand Prix 1.40m</b> (Rules: Table A, Art 220.2.1.2)	• Class #800	Entry Fee: \$750

## \$500 Pony Jumper Classic

The pony jumper classic will be divided into specific heights based on pony size but judged as one class. Small ponies jump 0.70m, medium ponies jump 0.75m and large ponies jump 0.80m. A speed class will also be offered prior to the classic in the same height splits.

- Class #299 Pony Jumper Speed (S 0.70m /M 0.75m / L 0.80m)
- Class #300 Pony Jumper Classic (S 0.70m /M 0.75m / L 0.80m)

## \$1,000 U25 Classic Overlay with Class 800

To be held concurrently with the designated National Grand Prix. Final (overlay) to be held at the Outdoor Finale in October. Open to riders from the beginning of the calendar year in which they reach the age of 16 until the end of the calendar year in which they reach the age of 25. Riders must nominate to both the Grand Prix and the U25 component to be eligible.

- Class #801 Entry Fee: \$100

## \$2,000 Thoroughbred Jumper Series (\$17,000 Series) (CEP 1, Finals - CEP 2)

One class run in conjunction with the 1.0m Jr/Am Jumper Classic – Pinned Separately. Open to all thoroughbreds with a valid tattoo or papers from The Jockey club of CTHS. Copy of the papers must be provided to the Horse Show Office, or Tattoo verified by Show Steward. Open to juniors, amateurs, and professionals. If shown by a professional in the thoroughbred class, the horse is not eligible for awards in the associated 1.0m Jr/Am Classic. Winner will receive a cooler, prize money, and ribbons to 8th.

Class Entry Fee: \$100

To be eligible for the final, horse must have competed in one of the previous thoroughbred jumper series classes throughout the summer.

## 2026 Jr/Am Jumper Team Challenge (0.6m / 0.75m / 0.9m / 1.0m)

Series composition - CEP Spring 4, ASE 3 - FINAL: CEP Fall 2 (Greenhawk Fall Cup)

**Team composition:** 4 riders per team with athletes competing in the 0.6m, 0.75m, 0.9m and 1.0m Jr/Am divisions. Each team MUST have riders competing at a minimum of two different heights. Riders must compete at the height they are jumping at the event. Example - a team could have 1 rider at 0.6m & 3 riders at 0.9m.

Teams must be registered through the competition office prior to each event.

**Scoring:** All four riders to compete over a Table A track. Each team will have one drop score. Teams tied for first place will return for a jump-off. Teams must select 1 rider to compete in the tie-breaking jump-off.

**Points:** 1st - 10, 2nd - 8, 3rd - 6, 4th - 5, 5th - 4, 6th - 3, 7th - 2, 8th - 1

The top 6 teams (and ties) or top 60%, whichever is greater, after the qualifiers will compete in the \$2,500 final. There is no entry fee for the final. Any team finishing in the Top 4 at either qualifier can compete at the final. If there are less than 5 teams registered, this competition will not run.

Qualifier Entry Fee: \$50/rider | Qualifiers: Ribbons to 8th | Final \$2,500 - \$1250 / \$750 / \$500

## Cabana Coast 5/6/7 year old Qualifier

- Class #270,271,272 – 5-Year-Old Qualifier – \$50/ Class (\$75/ Classic)
- Class #273,274,275 – 6-Year-Old Qualifier – \$50/ Class (\$75/ Classic)
- Class #276,277,278 – 7-Year-Old Qualifier – \$50/ Class (\$75/ Classic)

## CHAMPIONSHIP - The Outdoor Finale

- Class #270 – \$4,000 5-Year-Old Final - 1.10m~1.15m - Entry Fee: \$350
- Class #273 – \$5,000 6-Year-Old Final - 1.20m~1.25m - Entry Fee: \$450
- Class #276 – \$7,500 7-Year-Old Final - 1.30m~1.35m - Entry Fee: \$550

Finals will consist of one round Friday and one round Sunday. Faults from each round will be added together, and if there is a tie for first place, there will be a Jump-off.



# Dutch Masters

CONSTRUCTION SERVICES LTD.

*Personalized solutions for your country property*

Greg van Bolderen

Gary van Bolderen

[www.dutchmasters.on.ca](http://www.dutchmasters.on.ca)

705.737.3392



  
**SPRUCEWOOD**  
TACK SHOP

Tavistock • London • CEP • Angelstone • Online

[sprucewoodtack.com](http://sprucewoodtack.com)

# Let's talk horsepower.



Club Car

onward

ALBION   
GOLF CARS

info@albiogolfcars.com 416.236.1001



PARLANI

# PRIZE MONEY DISTRIBUTION CHART

Total	1st	2nd	3rd	4th	5th	6th	7th	8th	9th	10th
\$235	\$68	\$43	\$38	\$28	\$23	-	-	-	-	-
\$250	\$120	\$75	\$55	-	-	-	-	-	-	-
\$300	\$100	\$80	\$60	\$60	-	-	-	-	-	-
\$350	\$155	\$70	\$65	\$60	-	-	-	-	-	-
\$500	\$115	\$90	\$80	\$75	\$70	\$70	-	-	-	-
\$750	\$225	\$150	\$120	\$105	\$75	\$75	-	-	-	-
\$900	\$270	\$165	\$145	\$120	\$110	\$90	-	-	-	-
\$1,000	\$350	\$200	\$150	\$100	\$100	\$100	-	-	-	-
\$1,500	\$450	\$300	\$240	\$210	\$150	\$150	-	-	-	-
\$2,000	\$450	\$300	\$250	\$200	\$200	\$200	\$150	-	-	-
\$2,500	\$630	\$450	\$320	\$260	\$220	\$200	\$200	-	-	-
\$3,000	\$600	\$500	\$400	\$350	\$300	\$300	\$275	\$275	-	-
\$5,000	\$1,200	\$950	\$700	\$500	\$450	\$410	\$395	\$395	-	-
\$10,000	\$2,800	\$2,000	\$1,500	\$1,100	\$800	\$600	\$600	\$600	-	-
\$15,000	\$4,200	\$2,900	\$2,300	\$1,900	\$1,500	\$1,000	\$600	\$600	-	-
\$25,000	\$6,250	\$5,000	\$4,000	\$2,500	\$2,000	\$1,500	\$1,250	\$1,000	\$750	\$750
\$40,000	\$10,000	\$8,000	\$6,400	\$4,000	\$3,200	\$2,400	\$2,000	\$1,600	\$1,200	\$1,200

Your leading provider of  
custom equestrian products.



Ride Every Stride Inc.  
877-278-6588  
info@rideeverystride.com  
rideeverystride.com

*Made for you.*



## Equestrian Farm Development & Footing Specialist

- Consultation
- New Arena Design & Construction
- Rehabilitation of Existing Surfaces
- Footing Maintenance Programs
- Synthetic Additives Supply & Installation



Viridian Land Management  
5-200 Green Lane East Suite 107  
East Gwillimbury ON, L9N 0Z7  
T:(416) 845-7170  
E: info@viridianlm.com



A DIVISION OF C.J. McDONALD CO. LTD  
 29 ADVANCE RD, TORONTO, ON M8Z 2S6  
 OFFICE: 416-236-1001  
**SARAH (TEXT ONLY): 416-888-0968**  
 ALBIONGOLFCARS.COM

## CALEDON EQUESTRIAN PARK - Golf Cart Rental Form 2026

In consideration of the terms and conditions set forth herein, customer named below, ("Customer") and Albion Golf Cars ("Vendor") hereby agree as follows:

CONTACT INFORMATION (CUSTOMER OPERATING GOLF CART MUST PICK-UP)	
FULL NAME:	DRIVERS LICENSE #:
CELL PHONE #:	EMAIL:

**PALGRAVE ONLY GOLD SERIES, SILVER SERIES, DRESSAGE**

**4-PASSENGER CART:** 1-3 days: \$110 /day | 4-6 days: \$100/day | 7+ consecutive days: rate upon request\*\*

\*\*GOLD SERIES ONLY - Only applicable to consecutive-day rentals

**Maximum two (2) shows per form - please put back-to-back shows on the same form**

NOTE: You will be charged from the date you pick-up the cart to the date you return it - we do not rent by the hour

SHOW	PICK-UP DATE	RETURN DATE	TOTAL

CREDIT CARD NUMBER: _____	SUBTOTAL:
EXPIRY: _____ SECURITY #: _____	HST 13%:
CARDHOLDER NAME: _____	<b>TOTAL (CAD):</b>

SIGNATURE: \_\_\_\_\_

**CARD MUST BE VALID AT SHOW TIME ~ IF CARD IS COMPROMISED BETWEEN BOOKING AND THE SHOW, PLEASE NOTIFY SARAH**

**PAYMENT BY E-TRANSFER ALSO ACCEPTED BUT A CREDIT CARD MUST BE ON FILE FOR INCIDENTALS; PLEASE EMAIL SARAH FOR DETAILS: SARAH@ALBIONGOLFCARS.COM**

**TERMS & CONDITIONS OF RENTAL AGREEMENT - PLEASE READ CAREFULLY**

- Vendor (Albion) presents all rental vehicles as in good working order at delivery. Vehicles are used golf cars and customer can accept the vehicle 'as is', 'with all the faults' condition, without any warranty or representation, either express or implied, as to merchantability or the fitness of the car(s) for any particular purpose. Customer assumes all responsibility for and all risk of loss, damage or injury, including death that may occur to the undersigned in connection with the use of any car(s) during the rental period.
- Customer hereby releases Vendor and shall indemnify, defend and save Vendor harmless from any/all liability, loss, damage, expense, causes of action, attorney's fees, suits, claims or judgments, whether in law or equity arising from any injury to a person(s) or property resulting from or based on the actual or alleged use, operation, delivery, or transportation of any or all of the car(s) below. Customer must at their own expense defend and any all suits, which may be brought against Vendor, either alone or in conjunction with others, upon, said liability or claim(s). Customer shall pay, satisfy and discharge any and all judgments or fines that may be covered against Vendor in any such action.
- Customer will provide, at their own expense, their own insurance to cover and said liability claims by any person(s), operator(s), or passenger(s) in amounts and against risks including public liability, loss, theft, damage, fire, destruction or vandalism acceptable to Vendor. In any event Vendor or Park Operations will not be liable for damage or theft, whether direct, incidental, special or consequential in excess of the leasing fee by Customer, whether or not Vendor has knowledge that such damage might be incurred, including, but not limited to, loss of income or profits. Vendor to be named as additional insured in insurance policy. Customer to provide proof of insurance to vendor upon request.
- Customer is responsible and agrees to pay for any and all damages to or theft of the car(s) up to the value of the car(s) or \$10,000 per golf car. Customer shall report theft, accidents or damage to the car immediately to Vendor. Customer will pay for and said damages to or theft of the car(s) leased under this agreement by the credit card identified below. Customer may not assign its rights under this Agreement.
- All drivers MUST be of legal driving age in the Province of Ontario and possess a valid driver's license. Park operators are authorized to confiscate vehicle immediately without refund for anyone without a valid G2/G license. Car can only be used for what it is designed for. Do not attempt to tamper with or alter speed of the golf car. Remove the key and secure car when not in use with lock and cable provided. One key fits all cars owned or leased by Vendor. Customer acknowledges that he/she has the right to inspect the car(s) and that the same are in good condition. For all purposes of this Agreement, acceptance of the car(s) and the condition thereof shall be conclusively established by Customer's taking possession of the car(s). Once the car(s) leave the possession of the vendor, Customer assumes the entire risk of loss, theft, damage or destruction to the car(s) from any cause whatsoever.
- Customer is responsible for golf cart from pick-up to return, even if they vacate the park. Lock and cable provided must be used at all times when not in use. Customer must return cart to the exact location and manner at which it was found; Abandoned carts, unlocked locks or any other misconduct is subject to a financial penalty at Vendors discretion
- No alteration or amendment hereof shall be binding on either party unless reduced to writing and signed by the party against whom such alteration or amendment is asserted. The validity in whole or in part of any of the terms of the agreement shall not affect the validity of any other term and all remedies available to either party for breach of contract are cumulative and may be exercised concurrently or separately. This Agreement shall be governed by and constructed in accordance with the laws of the Province of Ontario
- In event of any legal action including arbitration proceedings, or collection efforts seeking enforcement of the Agreement, Vendor shall be entitled to recover all collection fees, attorney's fees and cost of such proceedings from Customer, Whether litigation is pursued or not.
- Cancellations are permitted up to 24 hours before pick-up date; No cancellation fee applies; Rented carts are non-refundable under any circumstances unless otherwise discussed with Vendor
- Valid credit card required. You hereby irrevocably authorize Vendor to charge your credit card for any amounts due Vendor under this Agreement, including any amounts due for damage to or theft or loss of a car under this agreement.

**PLEASE READ CAREFULLY: SIGN AND SEND A LEGIBLE SCAN/PHOTO OF FORM TO SARAH BY EMAIL [sarah@albiongolfcars.com](mailto:sarah@albiongolfcars.com) OR TEXT 416-888-0968 TO INDICATE YOUR UNDERSTANDING OF THE ABOVE REGULATIONS AND AGREEMENT. WE NO LONGER ACCEPT FORM BY FAX.**

NAME (PLEASE PRINT)	SIGNATURE	DATE
---------------------	-----------	------



**IN A CLASS OF ITS OWN.**  
 AUTOMOTIVE LUXURY, REDEFINED.

[policaro.ca](http://policaro.ca)




















**Best Western PLUS**

**Best Western Plus Orangeville Inn & Suites**

Toll Free Central Reservations: 1(800) 780-7234 | Hotel Direct: (519) 941-3311  
 7 Buena Vista Drive, Orangeville, Ontario L9W 0A2 Canada



**EQUUS INTEGRAL**

The Brand. The Saddle.

